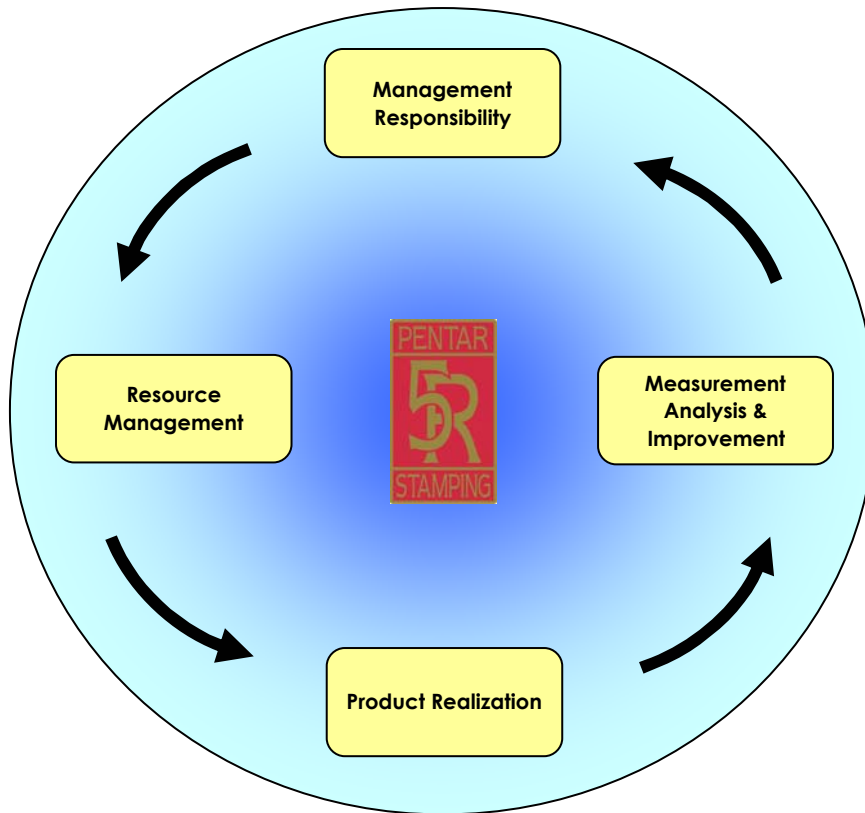




Pentastamping, Inc.



Quality Systems



Quality Policy

Regimented commitment to quality using **Continuous Improvement** efforts and targeting **Zero Defects** is an ongoing and **Un-compromised** way of doing business at Pentastamping.

Pentar Stamping, Inc.

ISO 9001:2008



NSF International Strategic Registrations

789 North Dixboro Road, Ann Arbor, Michigan 48105
(888) NSF-9000 | www.nsf-isr.org

Certificate of Registration

This certifies that the Quality Management System of

Pentar Stamping, Inc.

1821 Wildwood Avenue
Jackson, Michigan, 49204, United States

has been assessed by NSF-ISR and found to be in conformance to the following standard(s):

ISO 9001:2008

Scope of Registration:

Production of metal stampings and assemblies.

Exclusions: 7.3



Certificate Number: 5Z551-IS3
Certificate Issue Date: 20-JUN-2011
Registration Date: 18-JUN-2011
Expiration Date *: 17-JUN-2014

William Niedzwiecki,
President & General Manager,
NSF-ISR, Ltd.

Authorized Registration and/or Accreditation Marks. This certificate is property of NSF-ISR and must be returned upon request. *Company is audited for conformance at regular intervals. To verify registrations call (888) NSF-9000 or visit our web site at www.nsf-isr.org

Pentar Stamping, Inc became ISO certified in September of 2002. We are audited by NSF-ISR every 6 months and have received only 3 minors since.

Pentar Stamping, Inc.

QOS

Quality Operating System

Pentar Stamping QOS Tracking

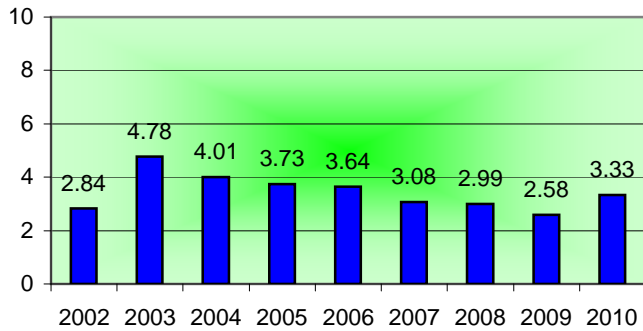
- ▶ **Number Of Customer Concerns**
- ▶ **Number Of Customer Rejections**
- ▶ **Number Of Supplier Rejections**
- ▶ **Internal PPM's**
- ▶ **External PPM's**
- ▶ **Housekeeping**
- ▶ **Percent Of Conforming Dock Audits**
- ▶ **Number Of Hold Tags Written**
- ▶ **Percent On Time Delivery**
- ▶ **Average Die Change Times**
- ▶ **Inventory Turns**
- ▶ **Safety (Injuries)**

Along With Defect Pareto Analysis

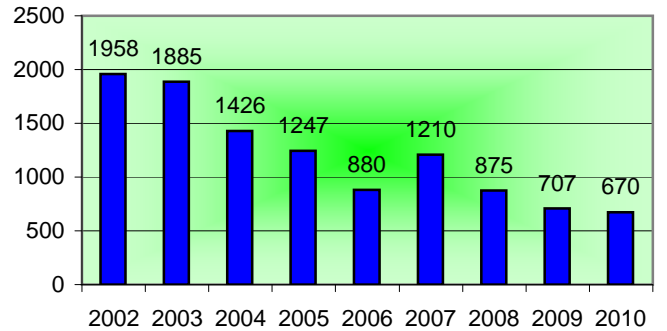
Pentar Stamping uses, External PPM's, On Time Delivery & the Dock Audits to determine customer satisfaction.

The Charts

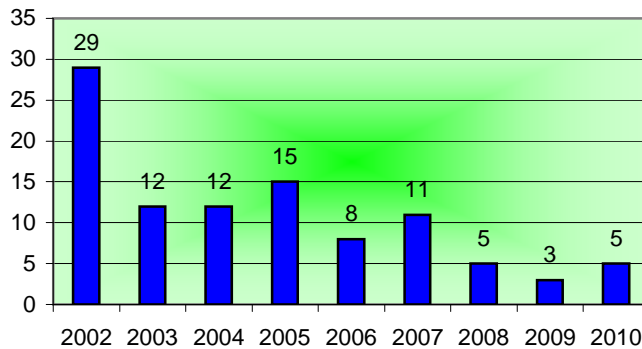
Pentar Stamping - External PPM



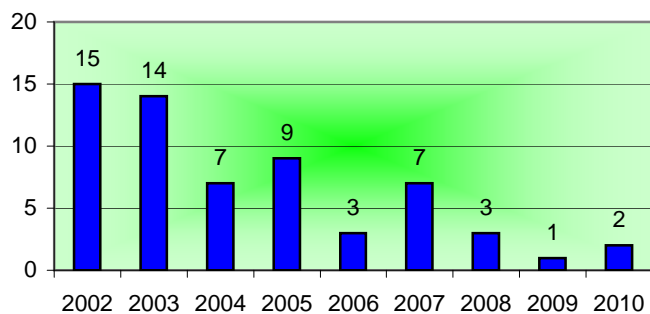
Pentar Stamping - Internal PPM



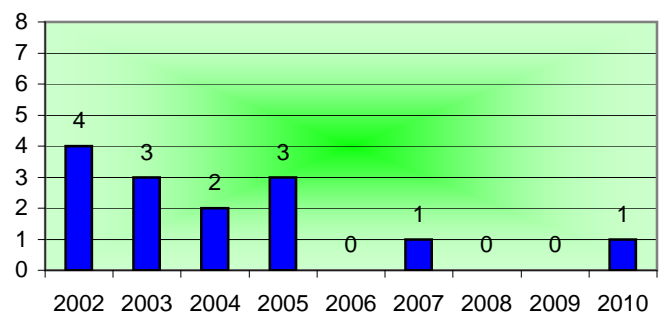
Pentar Stamping - Customer Concerns



Pentar Stamping - Customer Rejections

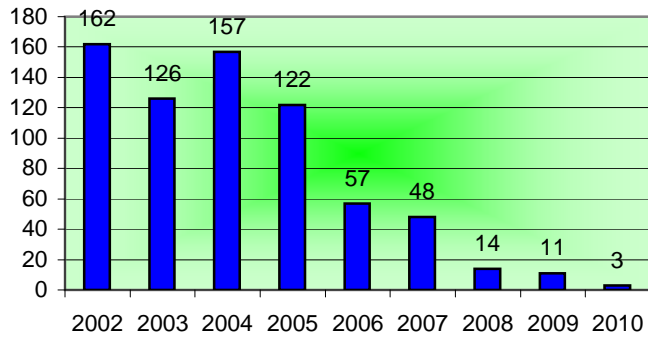


Pentar Stamping - Supplier Rejections

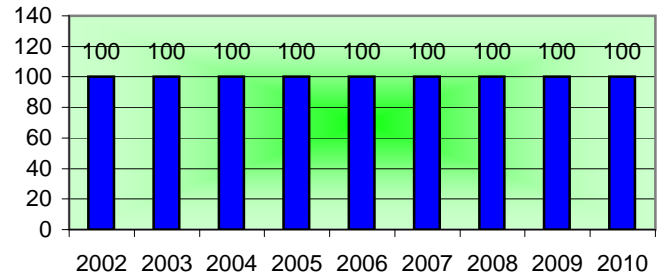


The Charts

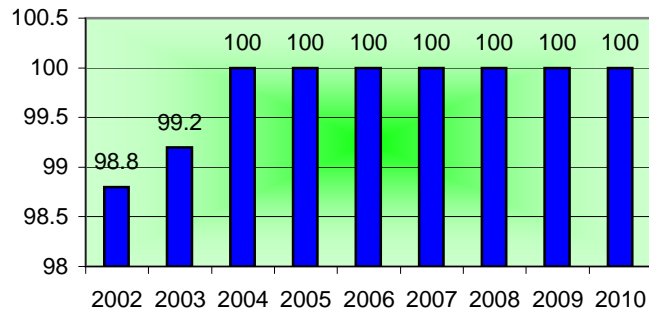
Pentar Stamping - Hold Tags Written



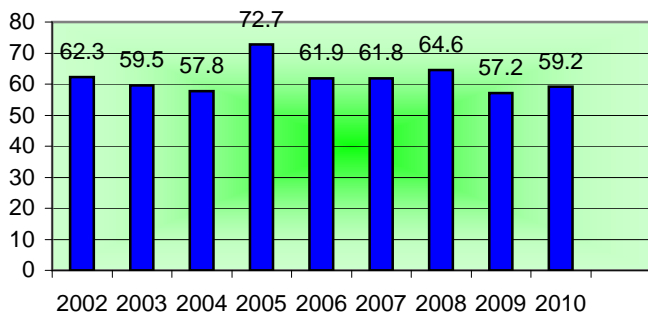
Pentar Stamping - % Conforming Dock Audits



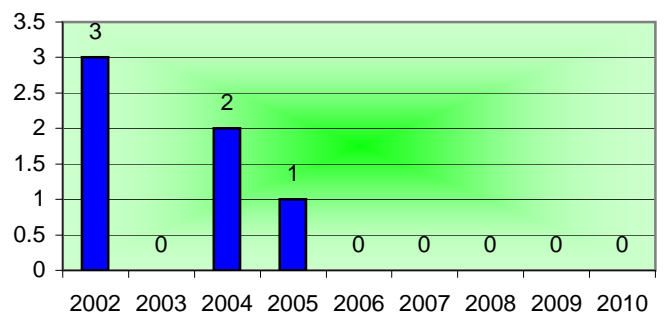
Pentar Stamping - On Time Delivery



Pentar Stamping - Average Die Change



Pentar Stamping - Safety Injuries



Pentar Stamping, Inc.

Metrology



**Controlled lab
with a Mitutoyo
Bright M CCM
with a
measurement
area of 28" x 28"
x 24"**



**10X Optical
Comparator and
Micro-Vu with a
measurement
area of 12" x 6"**



**Complete
contact
measurement
capabilities.**



**Destruct testing equipment includes, 10 ton Drake
push tester, 70 ton arbor press & torque testing.**

Quality Services Performed

For Our Internal & External Customers

- ▶ PPAP & PSW
- ▶ Control Plan
- ▶ PFMEA
- ▶ Gage Analysis & Studies
- ▶ Layout Inspection
- ▶ In-process Inspection
- ▶ 8-D & Team Problem Solving
- ▶ Process Optimization
- ▶ Internal ISO Audits
- ▶ Dock Audits
- ▶ SPC
- ▶ DOE
- ▶ Process Capability
- ▶ Controlled Studies

